



PTA Morningside
Elementary
School

General Body Mtg

August 23, 2022

Agenda

Welcome

About the MES PTA

Introductions & Updates

- Community

- Enrichment

- Operations

- Sustainability, Wellness, and Garden (SWAG)

- Communications

- Fundraising

Update on MES Renovation

Update on APS Decision on Inman Elementary

Presentation of 2021-22 Audit & Proposed 2022-23 Budget

Update from MES Administration

Closing

Tony Moore and Dawn Rutherford, Co-Presidents

Dawn Rutherford, Co-President

Vice Presidents

Gina Coffas, VP of Community

Anne-Marie DeBacker, VP of Enrichment

Camille Richardson, VP of Operations

Jackie Townley, VP of SWAG

Kristen Cincotta, VP of Communications

Justin Hubbarth, VP of Fundraising

Tony Moore, Co-President

Dawn Rutherford, Co-President

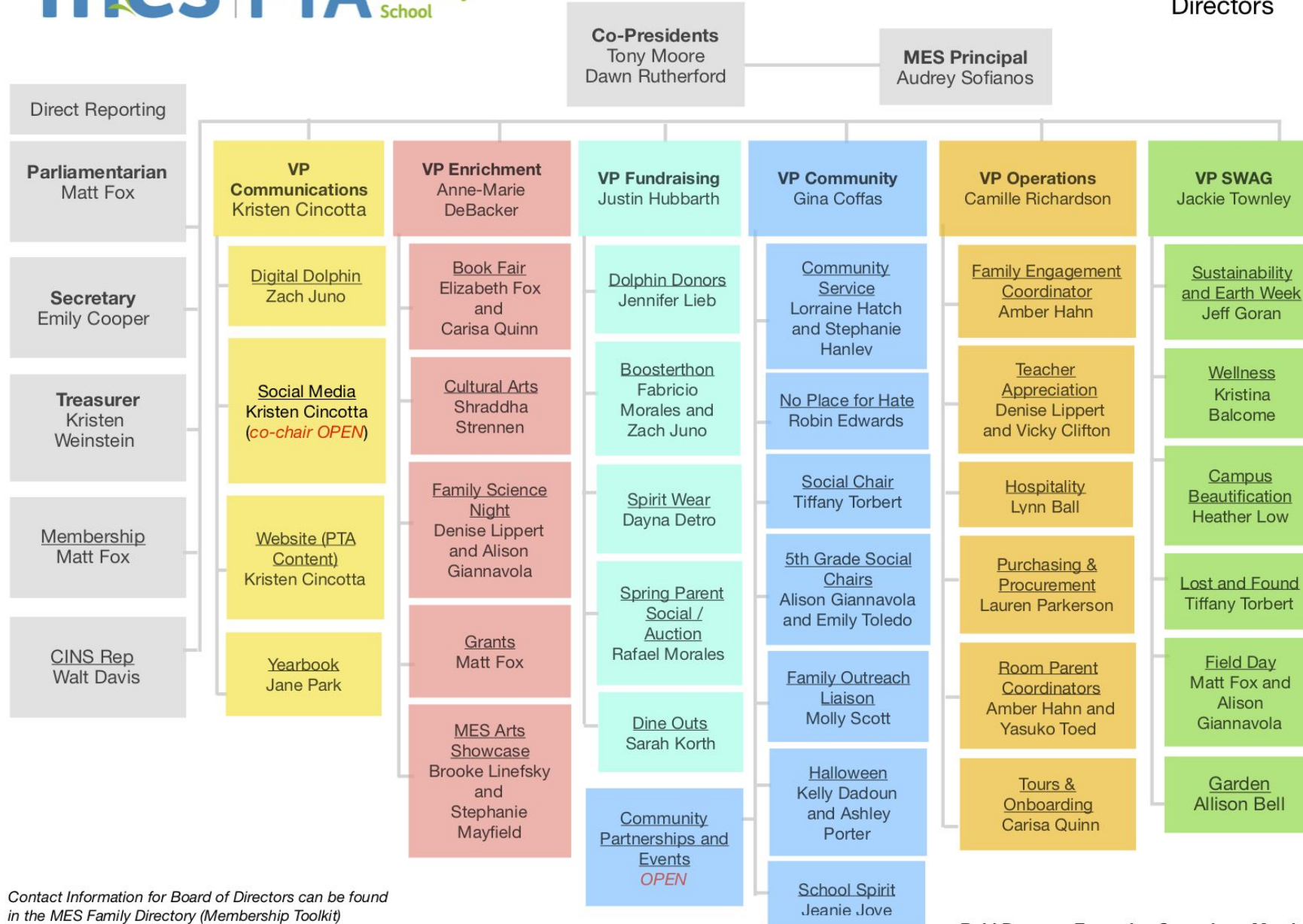
Kristen Weinstein, Treasurer

Audrey Sofianos, Principal

Dawn Rutherford, Co-President

About the MES PTA

The bottom of the slide features a decorative graphic consisting of two overlapping blue rectangular blocks. The block on the left is longer and positioned slightly higher than the block on the right, which is shorter and shifted to the right, creating a sense of depth and modern design.



Contact Information for Board of Directors can be found in the MES Family Directory (Membership Toolkit)

Bold Denotes Executive Committee Member

VPs and Programs

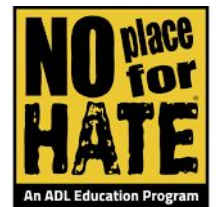
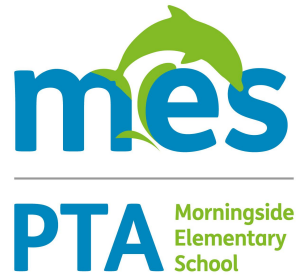
There's a role for everyone. How can you get involved?

Community

The PTA Community team supports our MES families and the community as a whole with initiatives that position MES as an important contributor to the community and supporter of our own students and their families.

Initiatives include:

- Community Service/Dolphins Do Good - The PTA will organize service projects with the goal of giving back to our Morningside Elementary community and our larger Atlanta Public School community. Look for information about volunteer and service opportunities in the Digital Dolphin and from your Room Parents.
- No Place for Hate - An APS initiative designed to rally the entire school around the goal of creating a welcoming community committed to stopping all forms of bias and bullying.
- Social Chairs - Grade level representatives will plan get togethers for the full grade levels
- Family Outreach - Working with the MES Social Worker and the Parent Liaison to provide specific items or scholarship opportunities to support MES students directly
- Halloween Monster Bash - Highly-anticipated community event, a favorite for students, families and community members
- School Spirit - Show our best dolphin pride on designated days throughout the year
- Community Partnerships and Events - Ensure an MES presence at various neighborhood events across the community



Enrichment

Morningside PTA is proud to support a variety of enrichment programs for our students every year.

This year, we are proud to bring to MES:

- Book Fair (Sept 19 - 23)
- Family Science Night (February)
- MES Arts Showcase (April)
- International Festival (TBD)
- Grants Program (application open year long for any teacher, staff, student or parent to request funds that enrich the learning environment for all students)



Sustainability, Wellness, and Garden (SWAG)

WHAT IS SWAG? The Sustainability, Wellness, and Garden Committee ("SWAG") consists of three teams that jointly deliver programming to help MES students and faculty build personal and community practices that are healthy for themselves and for their environment.

Sustainability: taking initiatives to making MES more green! Making steps towards recycling and hosting events with CHaRM...also **EARTH WEEK coming later this year.**

Wellness: focusing on the wellbeing of students and staff. With mindful moments, smoothie days, walk to school day, and global handwashing day.

Garden: maintaining and working on school garden.

Field Day: planning the most incredible day of the year!

Beautification: ensuring that MES is a lovely campus, and trash free! Coffee and trash cleanup dates- coming soon!!

Lost and Found: organizing and cleaning the lost and found area, a lot of items get misplaced! We also will be working with partners to donate unclaimed items.

Shout out to this epic team of parent volunteers who help make all this happen!

Jeff Goran Kristina Balcome Heather Low Tiffany Torbert
Allison Bell Matt Fox Ali Giannavola



Operations

The Operations Committee provides critical information, much-needed supplies and thoughtful gifts for members of the MES community - including teachers and staff, parents/guardians and students.

Our committee is extremely dedicated, with most having served in their roles for multiple years!

2022-2023 Highlights:

- **Teacher Appreciation Week:** March 27-31
- **Principal Coffee & Chats:** Seven total; first is scheduled for September 16 @ 8am
- **Room Parents, Social Coordinators, Yearbook Liaisons:** check Membership Toolkit to sign up
- **NEW! Parent University:** first session scheduled for September 28 @ 8am

Shout out to the amazing team who makes it happen!

Denise Lippert

Amber Hahn

Lauren Parkerson

Vicky Clifton

Yasuko Toeda Lynn Ball

Carisa Quinn



Back to School Coffee & Kleenex Event



Teacher Appreciation: Monthly Treat



*"Homeless at Heart"
Donation Project
Organized by Room
Parents*



Teacher Appreciation Week: Coffee Truck

Communications



MES PTA Communications Channels:

- Digital Dolphin newsletter (weekly editions on Thursdays; archive in Membership Toolkit!)
- MES School Website
- MES Dolphin Community Facebook Group (*2022/23 Rising K group closing this week*)

Help Us Reach You!

- Activate your profile in the MES Family Directory (**Membership Toolkit**) ASAP at <https://morningsideelem.membershiptoolkit.com>
- Join the MES Dolphin Community Facebook Group

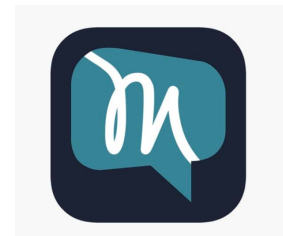
Have information to share with the MES community?

- Please email communications@morningsideschool.org or use the MES Communications Submission Form on the Digital Dolphin page of the MES Website

Yearbook:

- Yearbook sales are open NOW!
- Submissions for the cover art contest are due by August 29th
- 5th Grade:
 - Send baby pics in soon
 - Ads due by Nov 7th

Send questions about yearbooks to yearbook@morningsideschool.org



Fundraising



Spirit Wear - Chair Dayna Detro

Our first Pop-up shop was a HUGE success. We have partnered with Boosterthon Apparel to give a more streamlined spirit wear experience to the MES. community. The excitement of back to school really brought out the school spirit within the MES community and we are looking forward to our next pop-up shop soon!

Dolphin Donors - Chair Jen Lieb

The Dolphin Donors push for sponsorships from local businesses and community organizations began on July 19th, and we have seen great support from our community. Sponsorships from Dolphin Donors help fund many of the programs the PTA organizes each year. We will be ending active recruitment of new Dolphin Donors within the next two weeks, but new DD can always sponsor throughout the year.

Boosterthon - Chairs Fabricio Moraes and Zach Juno

This year's Boosterthon is in full planning stages and we are excited for the festivities to take place on **November 15th**. Boosterthon is our school's largest fundraiser and is only possible with support from our MES community. See you in November!

Casino Night-Spring Parent Social - Chair Raf Morales

Casino Night was last held in 2019, so we are ready to bring this fundraiser back to life in 2023! The event will occur in early March 2023 and is a fun way to celebrate with our MES community and raise money for our beloved elementary school.

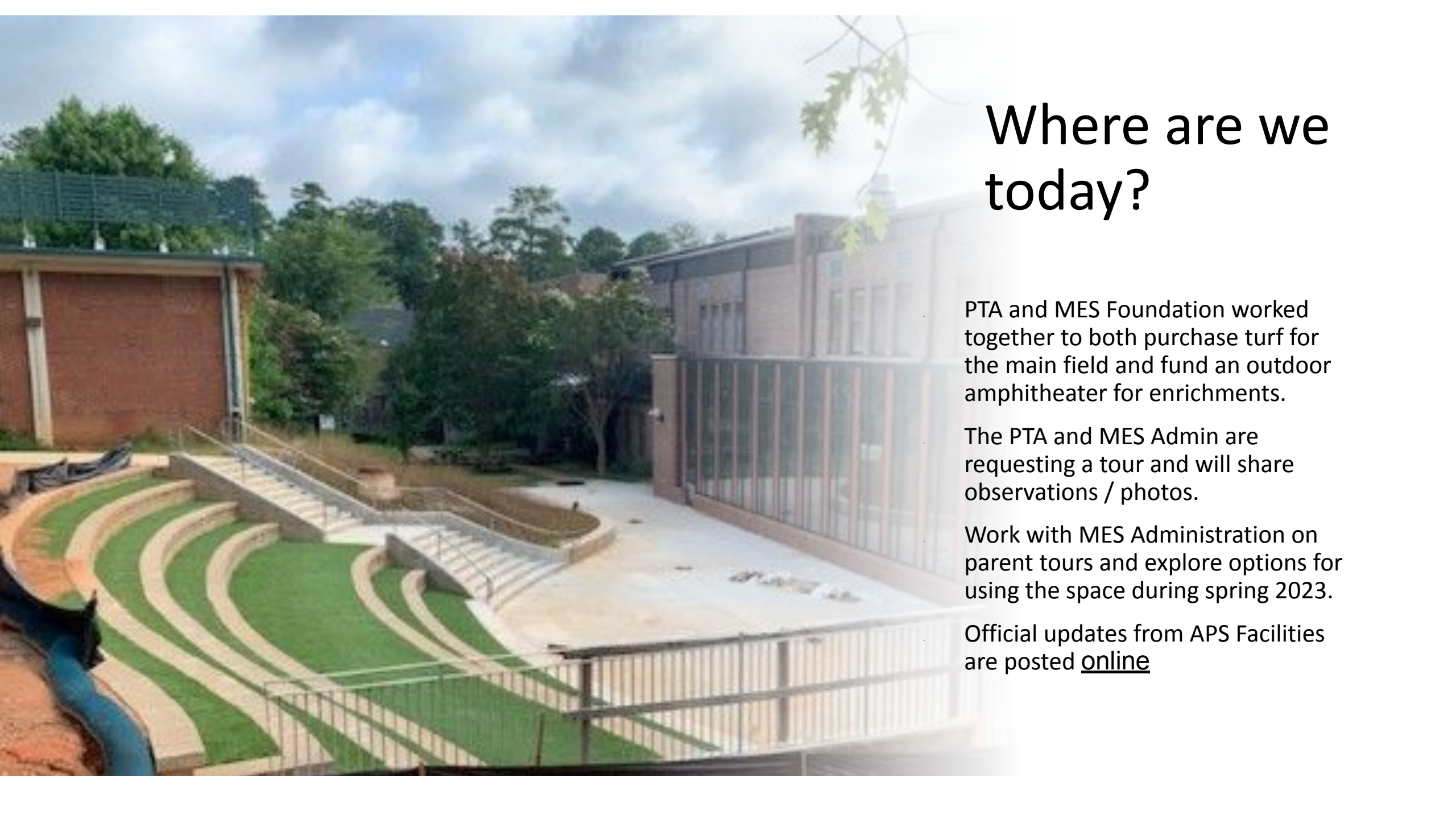
Dine Outs - Chair Sarah Korth

Every year, the MES PTA partners with various local restaurants through a popular Dine Out program. When dining at the restaurant, the family should let the waiter know that they are with MES and at the end of the week, the restaurant will provide a contribution to the school based on their sales.



Update on MES Renovation





Where are we today?

PTA and MES Foundation worked together to both purchase turf for the main field and fund an outdoor amphitheater for enrichments.

The PTA and MES Admin are requesting a tour and will share observations / photos.

Work with MES Administration on parent tours and explore options for using the space during spring 2023.

Official updates from APS Facilities are posted [online](#)

APS Decision on Inman Elementary



APS Board of Education voted on Monday, August 8th to create a new Inman K-5 Elementary School

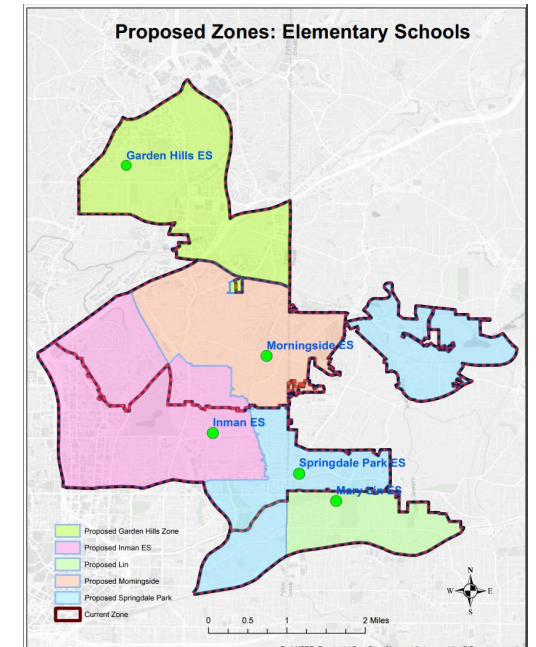
The APS Board of Education voted on Monday, August 8th to create a new school (at the Inman Building) and accordingly modify school attendance zone boundaries for Mary Lin ES, Morningside ES, and Springdale Park ES, as well as minor changes to the attendance zone boundaries of Garden Hills ES, Howard MS, Sutton MS, Midtown HS, and North Atlanta HS, per the attached maps and grandfather provisions provided in the details.

APS has stated that the next steps are to:

- Collaborate with internal and external communities to continue to build an implementation plan;
- Begin the principal hiring process, with the goal of recommending a principal at the September Board Meeting;
- Build out staffing plans and impact;
- Create and implement plans to ease the impact of transitions;
- Communicate the decision broadly; and
- Build excitement in the community for the new elementary school.

[Access the full presentation here](#)

[Access detailed maps here](#)



Supporting Inman Elementary

A Facebook group has been created by parents and community members to start organizing in preparation for the 2023-2024 school year.

The MES PTA is:

- In communication with other cluster elementary school PTAs to determine how best we can support the new school;

- Setting aside money to help support the formation of a new PTA/PTO at Inman Elementary;

- Looking into improvements that can be made at Inman this year that can benefit both current students and future students (i.e. technology upgrades to the auditorium, refreshing the courtyard, etc.).



Future Inman Elementary Families

Private group · 121 members

[Future Inman Elementary Families Facebook Group](#)



Outdated technology for enrichments

Proposed Budget for 2022-2023 SY

Kristen Weinstein, PTA Treasurer

Principal's Update

Audrey Sofianos

Thank you for your participation!

Your PTA Executive Committee

Next PTA General Meetings:
January 26, 2023 at 8am
April 19, 2023 at 8am



PTA Morningside
Elementary
School

